

CASS COUNTY ORGANIZATIONAL STRUCTURE

(Scherling)

CASS COUNTY OFFICES

COMMISSIONERS & COMMISSION ASSISTANT

APPOINTED OFFICES:

ADMINISTRATOR - HR - BUILDINGS & GROUNDS

CORONER

EMERGENCY SERVICES

EXTENSION SERVICES

ENGINEER - PLANNING - VECTOR CONTROL

INFORMATION TECHNOLOGY – GIS

SOCIAL SERVICES

TAX DIRECTOR

VETERAN'S SERVICES

WEED CONTROL

ELECTED OFFICES:

AUDITOR

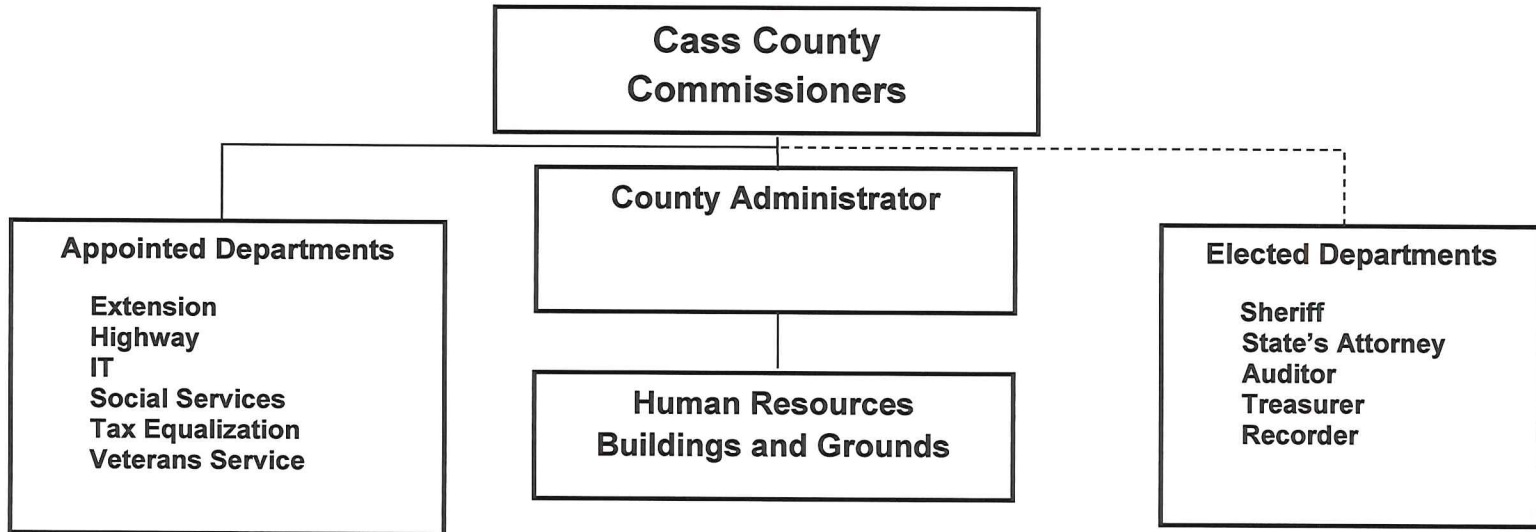
RECORDER

SHERIFF - JAIL - JUVENILE DETENTION - PATROL

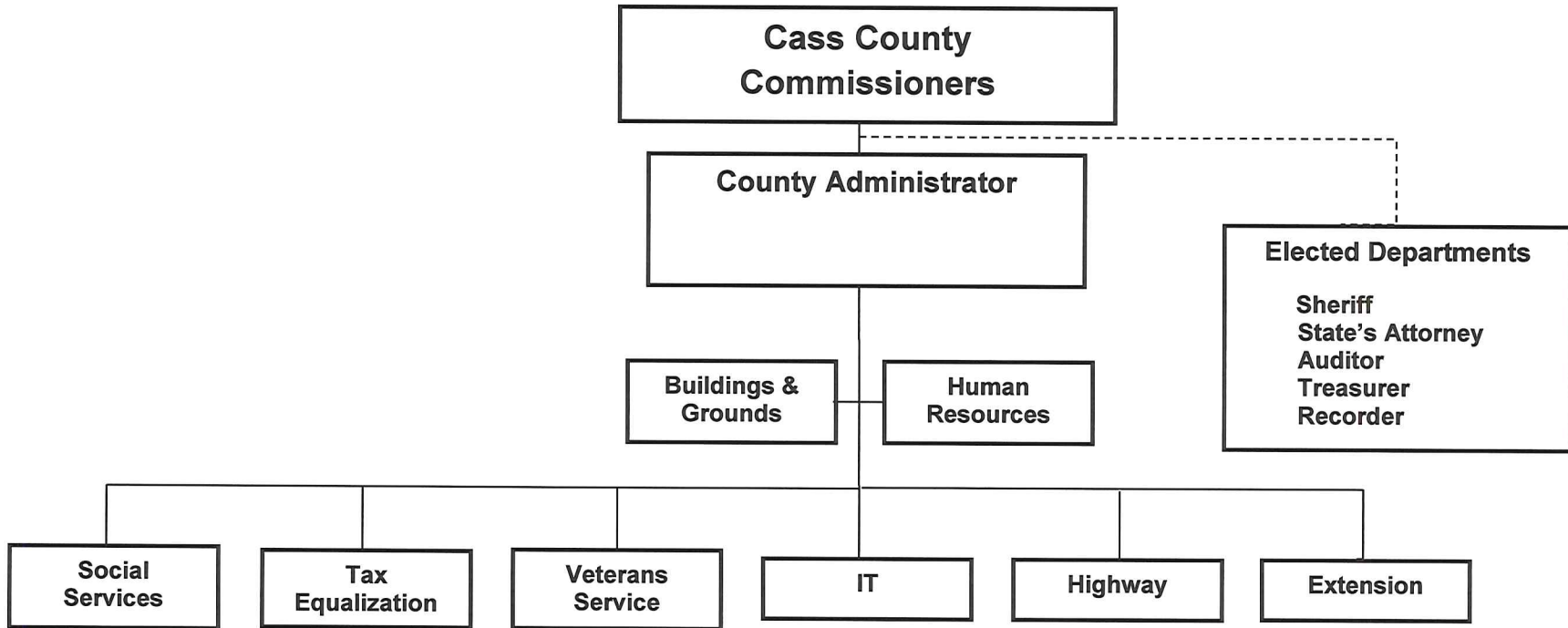
STATE'S ATTORNEY

TREASURER

**Current Organizational Chart
Cass County Government**



**Proposed Organizational Chart
Cass County Government**

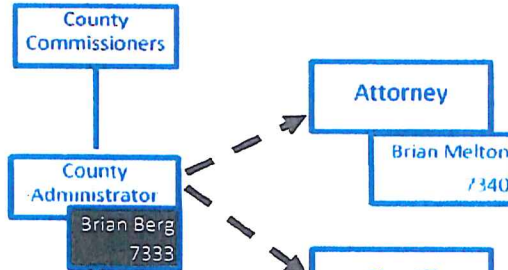




218-299-XXXX

Elected

Elected Officials



Addresses	
County Courthouse	807 11 th ST. N
Motor Vehicle	1300 15 th AVE N.
Family Service Center	715 11 th ST N.
Highway Dept.	2951 41 ½ ST S.
Hazardous Waste	2729 Hwy 10 E.
Juvenile Center	919 8 th AVE N.
Landfill	3301 190 th ST. S. Hawley
Sheriff Dept.	915 9 th AVE N.

County Commissioners	
Grant Weyland (Chair 2015)	District 5
Kevin Campbell	District 4
Jenny Mongeau	District 3
Frank Gross	District 2
Wayne Ingersoll	District 1

